

This carving pattern shows 5 levels of "branches" but looks just very cute with three, four or five levels of "branches". Making a tapered hexagon base makes it look like a "potted" tree.



1. Taper from center to eight inches up from the bottom.



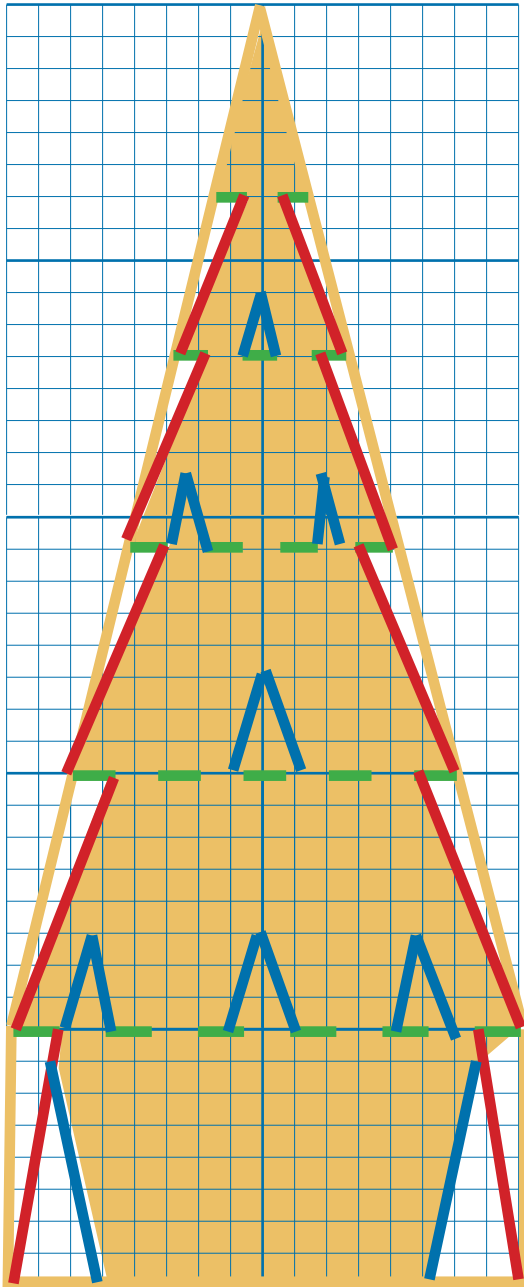
2. Taper four sides,



3. Taper four the four corners.



4. Make a **SHALLOW** "stop cut" for each level. (1.5" to 2" max.)



5. Taper each level up to the stop cut.



6. Taper each level all around.

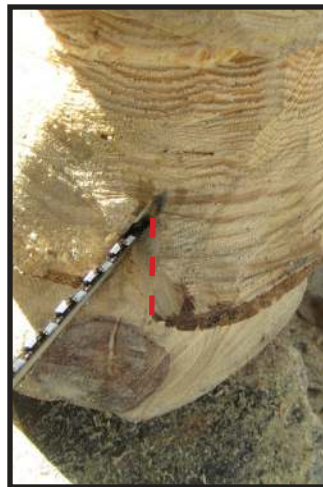
8



5. Undercut each level four inches.



5. Taper undersides of levels.



5. Alternate "V" cuts, four points on each level, eight at the



5. Use saw or grinder to "fir" the levels.